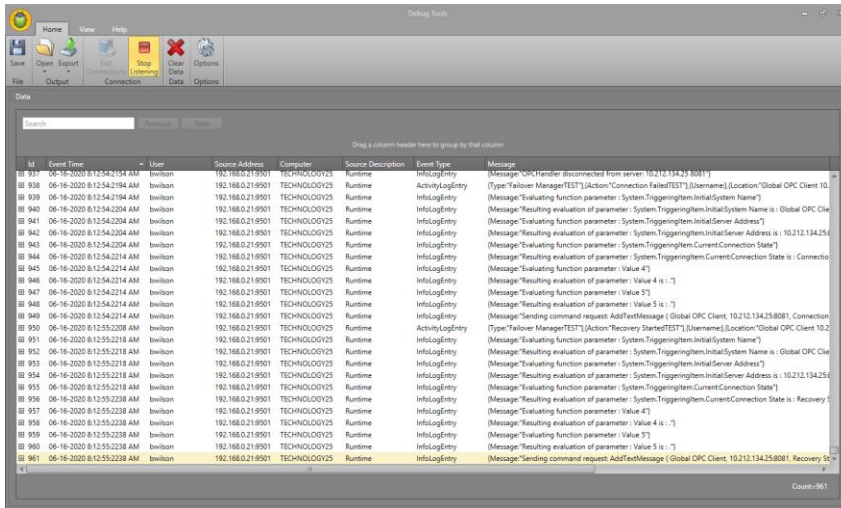


Module 8

Advanced Features: Debug Tools

Overview

Overview



The screenshot shows the 'Debug Tools' application interface. It features a menu bar with 'Home', 'View', and 'Help'. Below the menu is a toolbar with icons for 'Save', 'Open', 'Export', 'Output', 'Stop Listening', 'Clear Data', and 'Options'. The main area is a data table with columns: 'Id', 'Event Time', 'User', 'Source Address', 'Computer', 'Source Description', 'Event Type', and 'Message'. The table contains 961 rows of log entries, with the last row highlighted in yellow. The 'Message' column contains various system messages, such as 'OPC Handler disconnected from server', 'Sending command request: AddItemMessage', and 'Evaluating function parameter: System.TriggeringItem.CurrentConnection State is: Recovery S'.

Id	Event Time	User	Source Address	Computer	Source Description	Event Type	Message
939	06-16-2020 8:12:54:154 AM	baillon	192.168.0.19501	TECHNOLOGY25	Runtime	InfoLogEntry	(Message)OPC Handler disconnected from server: 10.212.134.25:8081
939	06-16-2020 8:12:54:194 AM	baillon	192.168.0.19501	TECHNOLOGY25	Runtime	ActivityLogEntry	(Type)Taiover ManagerTEST(Action)Connection FailedTEST(Username)Global OPC Client 10
940	06-16-2020 8:12:54:204 AM	baillon	192.168.0.19501	TECHNOLOGY25	Runtime	InfoLogEntry	(Message)Evaluating function parameter: System.TriggeringItem.InitialSystem Name
941	06-16-2020 8:12:54:204 AM	baillon	192.168.0.19501	TECHNOLOGY25	Runtime	InfoLogEntry	(Message)Resulting evaluation of parameter: System.TriggeringItem.InitialSystem Name is: Global OPC Clie
942	06-16-2020 8:12:54:204 AM	baillon	192.168.0.19501	TECHNOLOGY25	Runtime	InfoLogEntry	(Message)Evaluating function parameter: System.TriggeringItem.InitialServer Address
943	06-16-2020 8:12:54:204 AM	baillon	192.168.0.19501	TECHNOLOGY25	Runtime	InfoLogEntry	(Message)Resulting evaluation of parameter: System.TriggeringItem.InitialServer Address is: 10.212.134.25
944	06-16-2020 8:12:54:214 AM	baillon	192.168.0.19501	TECHNOLOGY25	Runtime	InfoLogEntry	(Message)Evaluating function parameter: System.TriggeringItem.CurrentConnection State
945	06-16-2020 8:12:54:214 AM	baillon	192.168.0.19501	TECHNOLOGY25	Runtime	InfoLogEntry	(Message)Resulting evaluation of parameter: System.TriggeringItem.CurrentConnection State is: Connecto
946	06-16-2020 8:12:54:214 AM	baillon	192.168.0.19501	TECHNOLOGY25	Runtime	InfoLogEntry	(Message)Evaluating function parameter: Value 4
947	06-16-2020 8:12:54:214 AM	baillon	192.168.0.19501	TECHNOLOGY25	Runtime	InfoLogEntry	(Message)Resulting evaluation of parameter: Value 4 is: -?
948	06-16-2020 8:12:54:214 AM	baillon	192.168.0.19501	TECHNOLOGY25	Runtime	InfoLogEntry	(Message)Evaluating function parameter: Value 5
949	06-16-2020 8:12:54:214 AM	baillon	192.168.0.19501	TECHNOLOGY25	Runtime	InfoLogEntry	(Message)Resulting evaluation of parameter: Value 5 is: -?
949	06-16-2020 8:12:54:214 AM	baillon	192.168.0.19501	TECHNOLOGY25	Runtime	InfoLogEntry	(Message)Sending command request: AddItemMessage (Global OPC Client: 10.212.134.25:8081) Connection
950	06-16-2020 8:12:55:208 AM	baillon	192.168.0.19501	TECHNOLOGY25	Runtime	ActivityLogEntry	(Type)Taiover ManagerTEST(Action)Recovery StartedTEST(Username)Global OPC Client 10.2
951	06-16-2020 8:12:55:218 AM	baillon	192.168.0.19501	TECHNOLOGY25	Runtime	InfoLogEntry	(Message)Evaluating function parameter: System.TriggeringItem.InitialSystem Name
952	06-16-2020 8:12:55:218 AM	baillon	192.168.0.19501	TECHNOLOGY25	Runtime	InfoLogEntry	(Message)Resulting evaluation of parameter: System.TriggeringItem.InitialSystem Name is: Global OPC Clie
953	06-16-2020 8:12:55:218 AM	baillon	192.168.0.19501	TECHNOLOGY25	Runtime	InfoLogEntry	(Message)Evaluating function parameter: System.TriggeringItem.InitialServer Address
954	06-16-2020 8:12:55:218 AM	baillon	192.168.0.19501	TECHNOLOGY25	Runtime	InfoLogEntry	(Message)Resulting evaluation of parameter: System.TriggeringItem.InitialServer Address is: 10.212.134.25
955	06-16-2020 8:12:55:218 AM	baillon	192.168.0.19501	TECHNOLOGY25	Runtime	InfoLogEntry	(Message)Evaluating function parameter: System.TriggeringItem.CurrentConnection State
956	06-16-2020 8:12:55:238 AM	baillon	192.168.0.19501	TECHNOLOGY25	Runtime	InfoLogEntry	(Message)Resulting evaluation of parameter: System.TriggeringItem.CurrentConnection State is: Recovery S
957	06-16-2020 8:12:55:238 AM	baillon	192.168.0.19501	TECHNOLOGY25	Runtime	InfoLogEntry	(Message)Evaluating function parameter: Value 4
958	06-16-2020 8:12:55:238 AM	baillon	192.168.0.19501	TECHNOLOGY25	Runtime	InfoLogEntry	(Message)Resulting evaluation of parameter: Value 4 is: -?
959	06-16-2020 8:12:55:238 AM	baillon	192.168.0.19501	TECHNOLOGY25	Runtime	InfoLogEntry	(Message)Evaluating function parameter: Value 5
960	06-16-2020 8:12:55:238 AM	baillon	192.168.0.19501	TECHNOLOGY25	Runtime	InfoLogEntry	(Message)Resulting evaluation of parameter: Value 5 is: -?
961	06-16-2020 8:12:55:238 AM	baillon	192.168.0.19501	TECHNOLOGY25	Runtime	InfoLogEntry	(Message)Sending command request: AddItemMessage (Global OPC Client: 10.212.134.25:8081) Recovery S

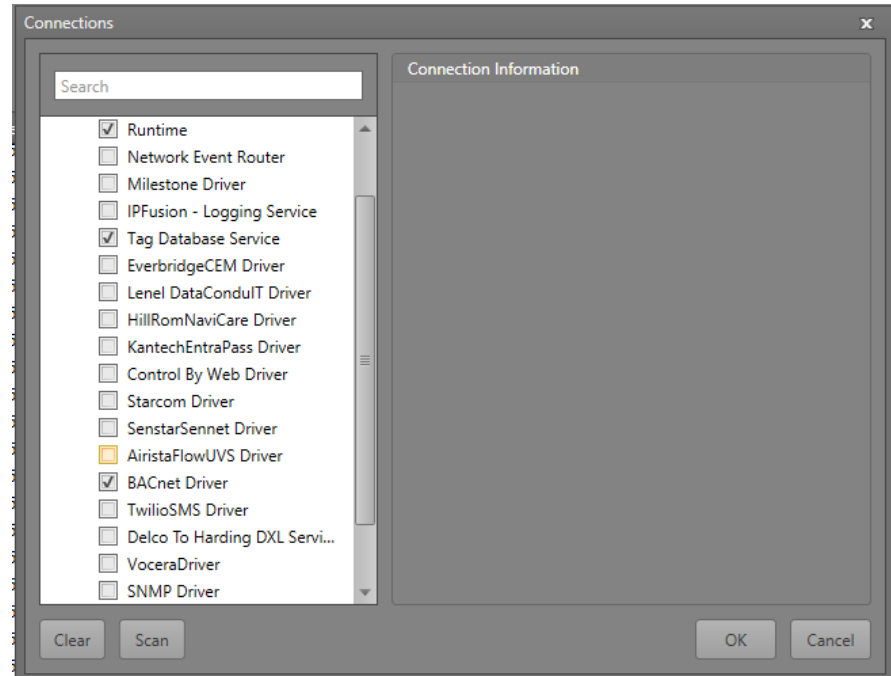
- Assists in troubleshooting the project.
- Connects to both Designer and Runtime, as well as to running drivers.
- Shows all logging and debugging messages as you continue to work in the project.
- Provides capability to filter and search live data.

Managing Connections



Managing Connections

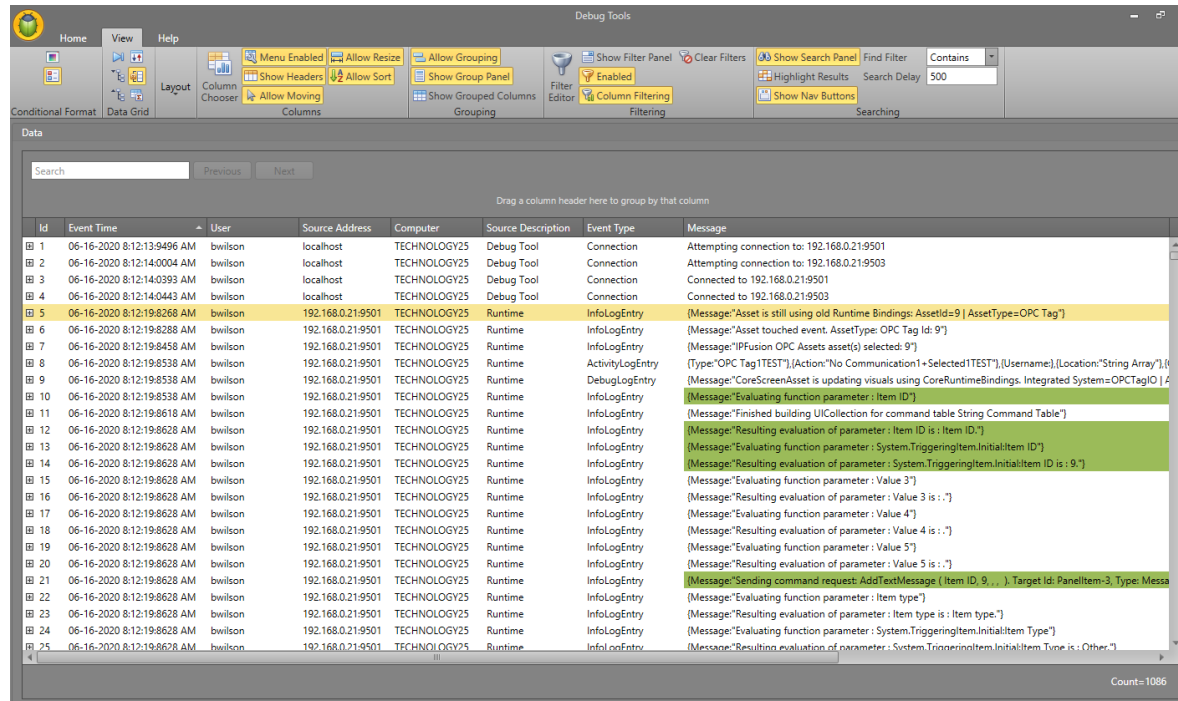
- Debug Tools can connect to many different entities.
- Possible to connect to multiple running processes at one time.
 - Multiple logs from different sources can be confusing. Use filtering.
- Add or scan for the connections to observe.
- Added and scanned connections are automatically saved.



Filtering Live Data

Filtering Live Data

- Debug tools offer many options to filter the data incoming.
- Adding filters, formatting rules, and searching for specific strings.

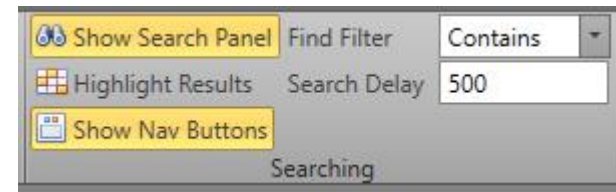


The screenshot displays the 'Debug Tools' application window. The interface includes a menu bar (Home, View, Help) and a ribbon with various tool options. The 'Data' section is active, showing a data grid with columns: Id, Event Time, User, Source Address, Computer, Source Description, Event Type, and Message. A search filter is applied to the 'Message' column, showing results for 'Contains' with a search delay of 500. The data grid shows 25 rows of log entries, with the 5th row highlighted. The 'Message' column contains detailed log messages, including connection attempts and runtime evaluations.

Id	Event Time	User	Source Address	Computer	Source Description	Event Type	Message
1	06-16-2020 8:12:13.9496 AM	bwilson	localhost	TECHNOLOGY25	Debug Tool	Connection	Attempting connection to: 192.168.0.21:9501
2	06-16-2020 8:12:14.0004 AM	bwilson	localhost	TECHNOLOGY25	Debug Tool	Connection	Attempting connection to: 192.168.0.21:9503
3	06-16-2020 8:12:14.0393 AM	bwilson	localhost	TECHNOLOGY25	Debug Tool	Connection	Connected to 192.168.0.21:9501
4	06-16-2020 8:12:14.0443 AM	bwilson	localhost	TECHNOLOGY25	Debug Tool	Connection	Connected to 192.168.0.21:9503
5	06-16-2020 8:12:19.8268 AM	bwilson	192.168.0.21:9501	TECHNOLOGY25	Runtime	InfoLogEntry	[Message:Asset is still using old Runtime Bindings: AssetId=9 AssetType=OPC Tag]
6	06-16-2020 8:12:19.8288 AM	bwilson	192.168.0.21:9501	TECHNOLOGY25	Runtime	InfoLogEntry	[Message:Asset touched event: AssetType: OPC Tag Id: 9']
7	06-16-2020 8:12:19.8458 AM	bwilson	192.168.0.21:9501	TECHNOLOGY25	Runtime	InfoLogEntry	[Message:IPFusion OPC Assets asset(s) selected: 9']
8	06-16-2020 8:12:19.8538 AM	bwilson	192.168.0.21:9501	TECHNOLOGY25	Runtime	ActivityLogEntry	(Type:"OPC Tag ITEST"),(Action:"No Communication1 + Selected ITEST"),(Username),(Location:"String Array"),(
9	06-16-2020 8:12:19.8538 AM	bwilson	192.168.0.21:9501	TECHNOLOGY25	Runtime	DebugLogEntry	[Message:CoreScreenAsset is updating visuals using CoreRuntimeBindings. Integrated System=OPCTagIO
10	06-16-2020 8:12:19.8538 AM	bwilson	192.168.0.21:9501	TECHNOLOGY25	Runtime	InfoLogEntry	[Message:Evaluating function parameter : Item ID']
11	06-16-2020 8:12:19.8618 AM	bwilson	192.168.0.21:9501	TECHNOLOGY25	Runtime	InfoLogEntry	[Message:Finished building UICollection for command table String Command Table']
12	06-16-2020 8:12:19.8628 AM	bwilson	192.168.0.21:9501	TECHNOLOGY25	Runtime	InfoLogEntry	[Message:Resulting evaluation of parameter : Item ID is : Item ID.']
13	06-16-2020 8:12:19.8628 AM	bwilson	192.168.0.21:9501	TECHNOLOGY25	Runtime	InfoLogEntry	[Message:Evaluating function parameter : System.TriggeringItem.InitialItem ID']
14	06-16-2020 8:12:19.8628 AM	bwilson	192.168.0.21:9501	TECHNOLOGY25	Runtime	InfoLogEntry	[Message:Resulting evaluation of parameter : System.TriggeringItem.InitialItem ID is : 9.']
15	06-16-2020 8:12:19.8628 AM	bwilson	192.168.0.21:9501	TECHNOLOGY25	Runtime	InfoLogEntry	[Message:Evaluating function parameter : Value 3']
16	06-16-2020 8:12:19.8628 AM	bwilson	192.168.0.21:9501	TECHNOLOGY25	Runtime	InfoLogEntry	[Message:Resulting evaluation of parameter : Value 3 is : .']
17	06-16-2020 8:12:19.8628 AM	bwilson	192.168.0.21:9501	TECHNOLOGY25	Runtime	InfoLogEntry	[Message:Evaluating function parameter : Value 4']
18	06-16-2020 8:12:19.8628 AM	bwilson	192.168.0.21:9501	TECHNOLOGY25	Runtime	InfoLogEntry	[Message:Resulting evaluation of parameter : Value 4 is : .']
19	06-16-2020 8:12:19.8628 AM	bwilson	192.168.0.21:9501	TECHNOLOGY25	Runtime	InfoLogEntry	[Message:Evaluating function parameter : Value 5']
20	06-16-2020 8:12:19.8628 AM	bwilson	192.168.0.21:9501	TECHNOLOGY25	Runtime	InfoLogEntry	[Message:Resulting evaluation of parameter : Value 5 is : .']
21	06-16-2020 8:12:19.8628 AM	bwilson	192.168.0.21:9501	TECHNOLOGY25	Runtime	InfoLogEntry	[Message:Sending command request: AddTextMessage (item ID, 9, . , .), Target Id: PanelItem-3, Type: Messa
22	06-16-2020 8:12:19.8628 AM	bwilson	192.168.0.21:9501	TECHNOLOGY25	Runtime	InfoLogEntry	[Message:Evaluating function parameter : Item type']
23	06-16-2020 8:12:19.8628 AM	bwilson	192.168.0.21:9501	TECHNOLOGY25	Runtime	InfoLogEntry	[Message:Resulting evaluation of parameter : Item type is : Item type.']
24	06-16-2020 8:12:19.8628 AM	bwilson	192.168.0.21:9501	TECHNOLOGY25	Runtime	InfoLogEntry	[Message:Evaluating function parameter : System.TriggeringItem.InitialItem Type']
25	06-16-2020 8:12:19.8628 AM	bwilson	192.168.0.21:9501	TECHNOLOGY25	Runtime	InfoLogEntry	[Message:Resulting evaluation of parameter : System.TriggeringItem.InitialItem Type is : Other.']

Searching the Data

- Search for specific text strings to filter the logs.
- Able to change the Search Filter formula and add different highlighting options to make traversing the search results easier.

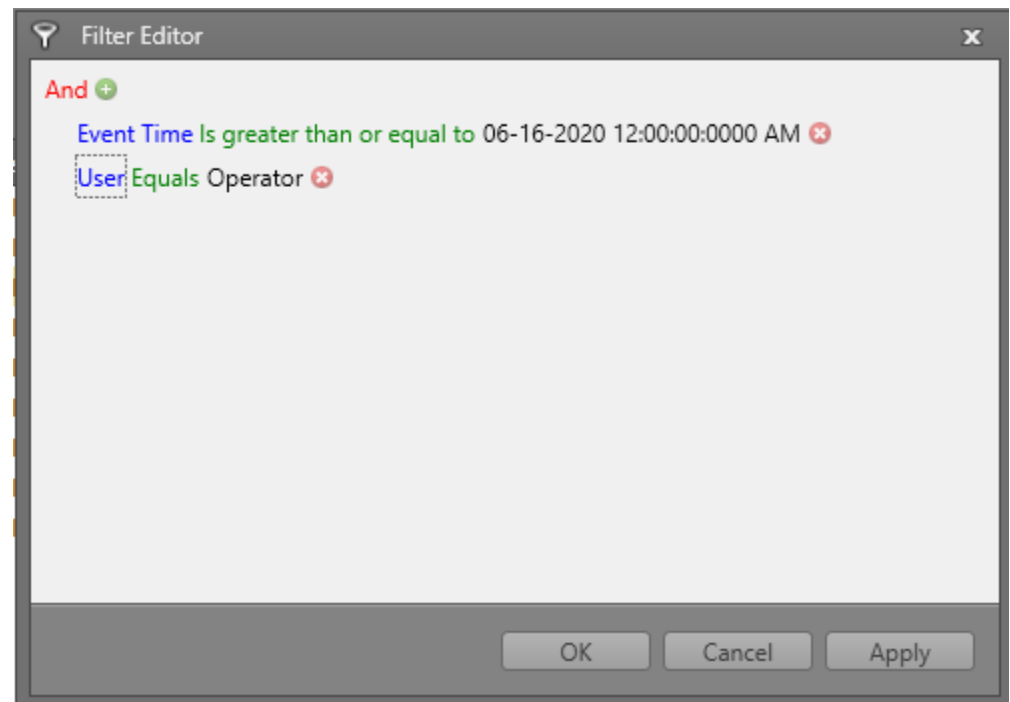
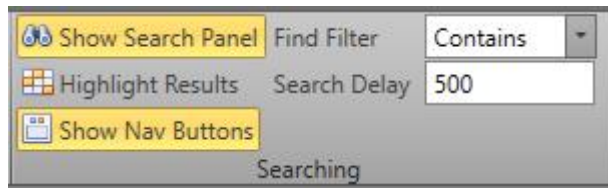


A screenshot of a log viewer interface. At the top, there is a search bar containing the text 'connected', with 'Previous' and 'Next' buttons. Below the search bar is a table with columns: Id, Event Time, User, Source Address, Computer, Source Description, Event Type, and Message. The table contains 10 rows of log data. The row with Id 897 is highlighted in yellow. The message for this row is '{Message:"OPCHandler disconnected from server: 10.212.134.25 8081"}'. Other rows show connection events and subsequent disconnection messages.

Id	Event Time	User	Source Address	Computer	Source Description	Event Type	Message
3	06-16-2020 8:12:14:0393 AM	bwilson	localhost	TECHNOLOGY25	Debug Tool	Connection	Connected to 192.168.0.21:9501
4	06-16-2020 8:12:14:0443 AM	bwilson	localhost	TECHNOLOGY25	Debug Tool	Connection	Connected to 192.168.0.21:9503
897	06-16-2020 8:12:32:1406 AM	bwilson	192.168.0.21:9501	TECHNOLOGY25	Runtime	InfoLogEntry	{Message:"OPCHandler disconnected from server: 10.212.134.25 8081"}
937	06-16-2020 8:12:54:2154 AM	bwilson	192.168.0.21:9501	TECHNOLOGY25	Runtime	InfoLogEntry	{Message:"OPCHandler disconnected from server: 10.212.134.25 8081"}
962	06-16-2020 8:13:16:2773 AM	bwilson	192.168.0.21:9501	TECHNOLOGY25	Runtime	InfoLogEntry	{Message:"OPCHandler disconnected from server: 10.212.134.25 8081"}
987	06-16-2020 8:13:19:3667 AM	bwilson	192.168.0.21:9501	TECHNOLOGY25	Runtime	InfoLogEntry	{Message:"OPCHandler disconnected from server: 10.99.96.188 8081"}
1012	06-16-2020 8:13:22:4445 AM	bwilson	192.168.0.21:9501	TECHNOLOGY25	Runtime	InfoLogEntry	{Message:"OPCHandler disconnected from server: 10.99.96.188 8081"}
1037	06-16-2020 8:13:25:5243 AM	bwilson	192.168.0.21:9501	TECHNOLOGY25	Runtime	InfoLogEntry	{Message:"OPCHandler disconnected from server: 10.99.96.188 8081"}
1062	06-16-2020 8:13:47:5829 AM	bwilson	192.168.0.21:9501	TECHNOLOGY25	Runtime	InfoLogEntry	{Message:"OPCHandler disconnected from server: 10.212.134.25 8081"}

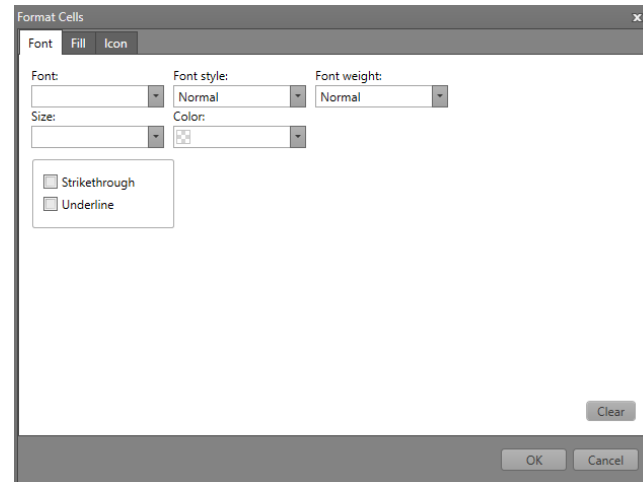
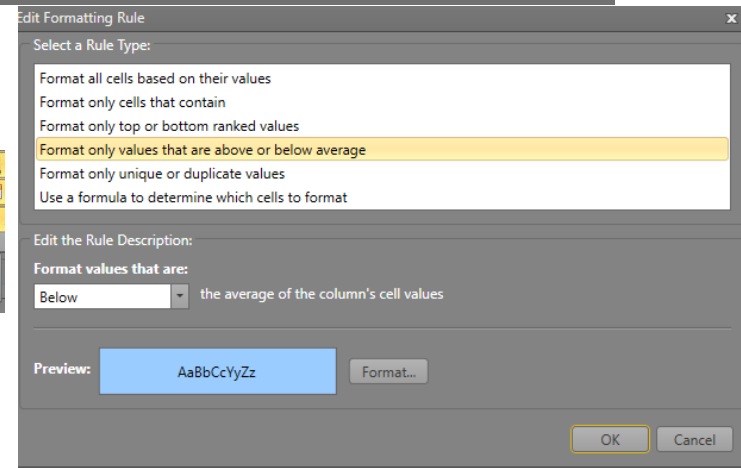
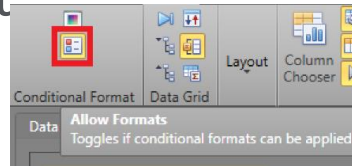
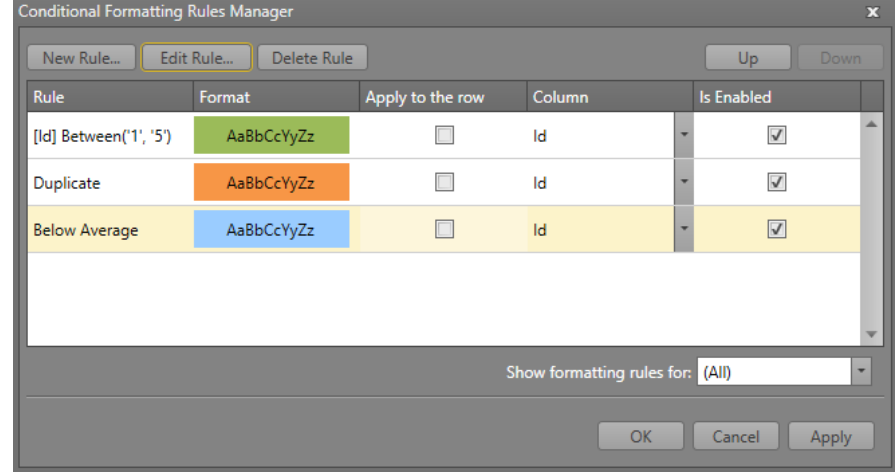
Filter Editor

- Create filter rules so as soon as the data is read, only the logs that satisfy the filter show.
- Can add multiple filters to create very specific conditions.



Formatting Rules

- Add formatting to the rows of logging entries to make them distinguishable.
- Create rules which will determine what entries get the format.
- Apply a series of different formats: font properties, fill color, or an icon.
- Select if the format will be applied to the whole row or just a specific data column.



Formatting Rules: Result

Data

Search Previous Next

Drag a column header here to group by that column

ID	Event Time	User	Source Address	Computer	Source Description	Event Type	Message
873	06-16-2020 8:12:21:9070 AM	bwilson	192.168.0.21:9501	TECHNOLOGY25	Runtime	InfoLogEntry	{Message:"Evaluating function parameter : Value 3"}
874	06-16-2020 8:12:21:9070 AM	bwilson	192.168.0.21:9501	TECHNOLOGY25	Runtime	InfoLogEntry	{Message:"Resulting evaluation of parameter : Value 3 is :."}
875	06-16-2020 8:12:21:9070 AM	bwilson	192.168.0.21:9501	TECHNOLOGY25	Runtime	InfoLogEntry	{Message:"Evaluating function parameter : Value 4"}
876	06-16-2020 8:12:21:9070 AM	bwilson	192.168.0.21:9501	TECHNOLOGY25	Runtime	InfoLogEntry	{Message:"Resulting evaluation of parameter : Value 4 is :."}
877	06-16-2020 8:12:21:9070 AM	bwilson	192.168.0.21:9501	TECHNOLOGY25	Runtime	InfoLogEntry	{Message:"Evaluating function parameter : Value 5"}
878	06-16-2020 8:12:21:9070 AM	bwilson	192.168.0.21:9501	TECHNOLOGY25	Runtime	InfoLogEntry	{Message:"Resulting evaluation of parameter : Value 5 is :."}
879	06-16-2020 8:12:21:9070 AM	bwilson	192.168.0.21:9501	TECHNOLOGY25	Runtime	InfoLogEntry	{Message:"Sending command request: AddTextMessage (Asset Type Name, OPC Tag, , ,). Target Id: Panellte
880	06-16-2020 8:12:21:9070 AM	bwilson	192.168.0.21:9501	TECHNOLOGY25	Runtime	InfoLogEntry	{Message:"Evaluating function parameter : Is Selected"}
881	06-16-2020 8:12:21:9070 AM	bwilson	192.168.0.21:9501	TECHNOLOGY25	Runtime	InfoLogEntry	{Message:"Resulting evaluation of parameter : Is Selected is : Is Selected."}
882	06-16-2020 8:12:21:9070 AM	bwilson	192.168.0.21:9501	TECHNOLOGY25	Runtime	InfoLogEntry	{Message:"Evaluating function parameter : System.TriggeringItem.Initial:Is Selected"}
883	06-16-2020 8:12:21:9070 AM	bwilson	192.168.0.21:9501	TECHNOLOGY25	Runtime	InfoLogEntry	{Message:"Resulting evaluation of parameter : System.TriggeringItem.Initial:Is Selected is : True."}
884	06-16-2020 8:12:21:9070 AM	bwilson	192.168.0.21:9501	TECHNOLOGY25	Runtime	InfoLogEntry	{Message:"Evaluating function parameter : Value 3"}
885	06-16-2020 8:12:21:9070 AM	bwilson	192.168.0.21:9501	TECHNOLOGY25	Runtime	InfoLogEntry	{Message:"Resulting evaluation of parameter : Value 3 is :."}
886	06-16-2020 8:12:21:9070 AM	bwilson	192.168.0.21:9501	TECHNOLOGY25	Runtime	InfoLogEntry	{Message:"Evaluating function parameter : Value 4"}
887	06-16-2020 8:12:21:9070 AM	bwilson	192.168.0.21:9501	TECHNOLOGY25	Runtime	InfoLogEntry	{Message:"Resulting evaluation of parameter : Value 4 is :."}
888	06-16-2020 8:12:21:9070 AM	bwilson	192.168.0.21:9501	TECHNOLOGY25	Runtime	InfoLogEntry	{Message:"Evaluating function parameter : Value 5"}
889	06-16-2020 8:12:21:9070 AM	bwilson	192.168.0.21:9501	TECHNOLOGY25	Runtime	InfoLogEntry	{Message:"Resulting evaluation of parameter : Value 5 is :."}
890	06-16-2020 8:12:21:9070 AM	bwilson	192.168.0.21:9501	TECHNOLOGY25	Runtime	InfoLogEntry	{Message:"Sending command request: AddTextMessage (Is Selected, True, , ,). Target Id: Panelltem-3, Type:
891	06-16-2020 8:12:22:1379 AM	bwilson	192.168.0.21:9501	TECHNOLOGY25	Runtime	InfoLogEntry	{Message:"Asset is still using old Runtime Bindings: AssetId=5 AssetType=OPC Tag"}
892	06-16-2020 8:12:22:1399 AM	bwilson	192.168.0.21:9501	TECHNOLOGY25	Runtime	InfoLogEntry	{Message:"Asset touched event. AssetType: OPC Tag Id: 5"}
893	06-16-2020 8:12:22:1399 AM	bwilson	192.168.0.21:9501	TECHNOLOGY25	Runtime	InfoLogEntry	{Message:"IPFusion OPC Assets asset(s) deselected: 5"}
894	06-16-2020 8:12:22:1399 AM	bwilson	192.168.0.21:9501	TECHNOLOGY25	Runtime	InfoLogEntry	{Message:"IPFusion OPC Assets asset(s) selected: 5"}
895	06-16-2020 8:12:22:1419 AM	bwilson	192.168.0.21:9501	TECHNOLOGY25	Runtime	ActivityLogEntry	{Type:"OPC Tag1TEST"},{Action:"No Communication1"},{Username},{Location:"Integer1"},{CommandStatus:Sta
896	06-16-2020 8:12:22:1419 AM	bwilson	192.168.0.21:9501	TECHNOLOGY25	Runtime	DebugLogEntry	{Message:"CoreScreenAsset is updating visuals using CoreRuntimeBindings. Integrated System=OPCTagIO A
897	06-16-2020 8:12:32:1406 AM	bwilson	192.168.0.21:9501	TECHNOLOGY25	Runtime	InfoLogEntry	{Message:"OPCHandler disconnected from server: 10.212.134.25 8081"}

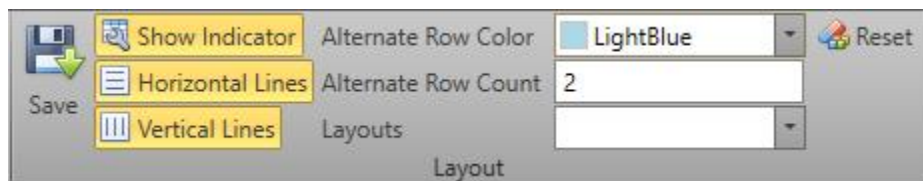
Count=1086



Customizing Live Data Layout

Customizing Layout

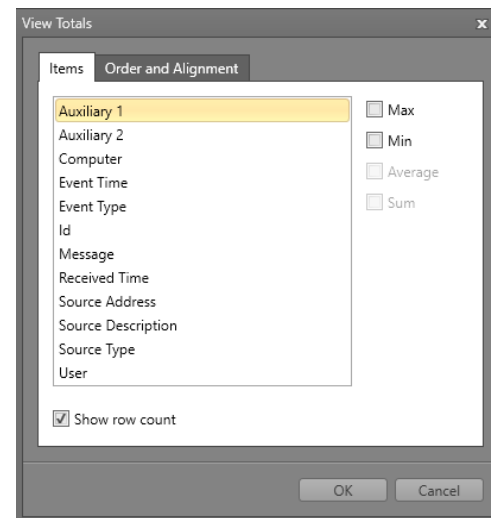
- The live data area can be customized to include row lines, additional data columns, log count summaries, and grouping similar data together.
- Show simple layout options like a row indicator, and horizontal and vertical column lines can be enabled.
 - Pressing the Reset option reverts all changes back to default settings.
 - Alternate Row Count and Color are not implemented.



	Id	Event Time	User	Source Address
+	873	06-16-2020 8:12:21:9070 AM	bwilson	192.168.0.21:9501
+	874	06-16-2020 8:12:21:9070 AM	bwilson	192.168.0.21:9501
+	875	06-16-2020 8:12:21:9070 AM	bwilson	192.168.0.21:9501
+	876	06-16-2020 8:12:21:9070 AM	bwilson	192.168.0.21:9501
+	877	06-16-2020 8:12:21:9070 AM	bwilson	192.168.0.21:9501
+	878	06-16-2020 8:12:21:9070 AM	bwilson	192.168.0.21:9501

Customizing Layout – Data Grid

- Show the newest data rows at the top.
- Expand or collapse the displayed information in each row.
- Show or hide a navigation panel and a summary panel.
- Summary panel can be edited to show the what data is logged the most and the least.



Count=1086, Max of Event Type is WarningLogEntry, Max of Source Type is Application

Customizing Layout – Data Grid

- Rows can be viewed either collapsed or expanded
- The expanded format can provide further information

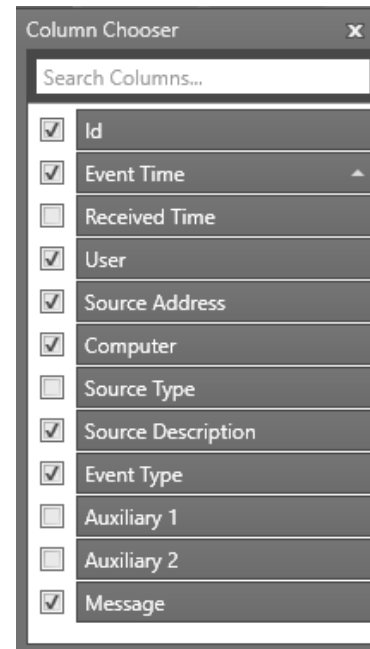
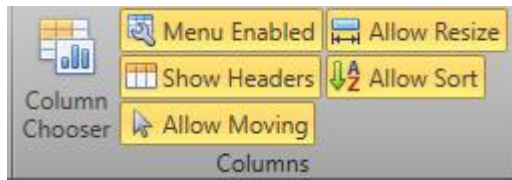
1308	06-16-2020 8:43:54:9807 AM	bwilson	192.168.0.21:9501	TECHNOLOGY25	Runtime	InfoLogEntry	{Message:"Milestone asset(s) deselected: 33"}
1309	06-16-2020 8:43:54:9817 AM	bwilson	192.168.0.21:9501	TECHNOLOGY25	Runtime	InfoLogEntry	{Message:"Milestone asset(s) selected: 33"}
1310	06-16-2020 8:43:54:9897 AM	bwilson	192.168.0.21:9501	TECHNOLOGY25	Runtime	ActivityLogEntry	{Type:"Milestone Camera Asset"},{Action:"Recording"},{Username:},{Location:"Shop 21"},{CommandStatus:Stat
1318	06-16-2020 8:45:10:0065 AM	bwilson	192.168.0.21:9501	TECHNOLOGY25	Runtime	InfoLogEntry	{Message:"Asset touched event. AssetType: Camera Id: 33"}
1319	06-16-2020 8:45:10:0075 AM	bwilson	192.168.0.21:9501	TECHNOLOGY25	Runtime	InfoLogEntry	{Message:"Milestone asset(s) selected: 33"}
1320	06-16-2020 8:45:10:0084 AM	bwilson	192.168.0.21:9501	TECHNOLOGY25	Runtime	ActivityLogEntry	{Type:"Milestone Camera Asset"},{Action:"Recording+Selected"},{Username:},{Location:"Shop 21"},{Command

Additional Info



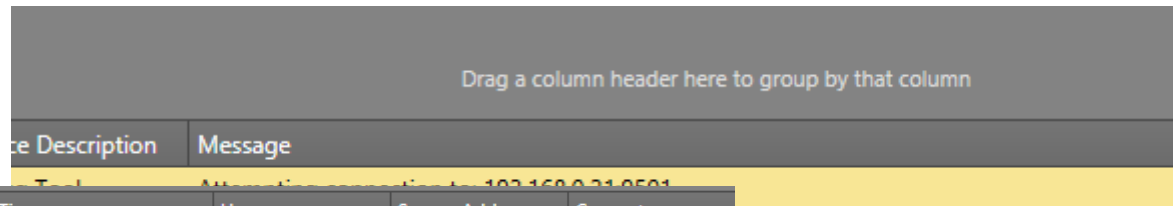
Customizing Layout: Columns

- Customize the columns section of the live data area.
- Show or hide headers, and enable or disable column moving, resizing, and sorting.
- Can also add additional columns to display more information.
 - Column Moving must be enabled to do this.



Customizing Layout: Grouping

- Can also group columns together to display data in a specific organized fashion.
- Can group multiple columns together as well.



Id	Event Time	User	Source Address	Computer
▶ Event Type: ActivityLogEntry				
▶ Event Type: Connection				
▶ Event Type: DEBUG				
▶ Event Type: DebugLogEntry				
▶ Event Type: ExceptionLogEntry				
▶ Event Type: INFO				
▶ Event Type: InfoLogEntry				
▼ Event Type: WarningLogEntry				
1164	06-16-2020 8:42:31:5820 AM	bwilson	192.168.0.21:9501	TECHNOLOGY25
1168	06-16-2020 8:42:31:5830 AM	bwilson	192.168.0.21:9501	TECHNOLOGY25
1175	06-16-2020 8:42:31:5910 AM	bwilson	192.168.0.21:9501	TECHNOLOGY25
1177	06-16-2020 8:42:31:5910 AM	bwilson	192.168.0.21:9501	TECHNOLOGY25
1179	06-16-2020 8:42:31:5930 AM	bwilson	192.168.0.21:9501	TECHNOLOGY25
1181	06-16-2020 8:42:31:5940 AM	bwilson	192.168.0.21:9501	TECHNOLOGY25
1188	06-16-2020 8:42:31:5960 AM	bwilson	192.168.0.21:9501	TECHNOLOGY25

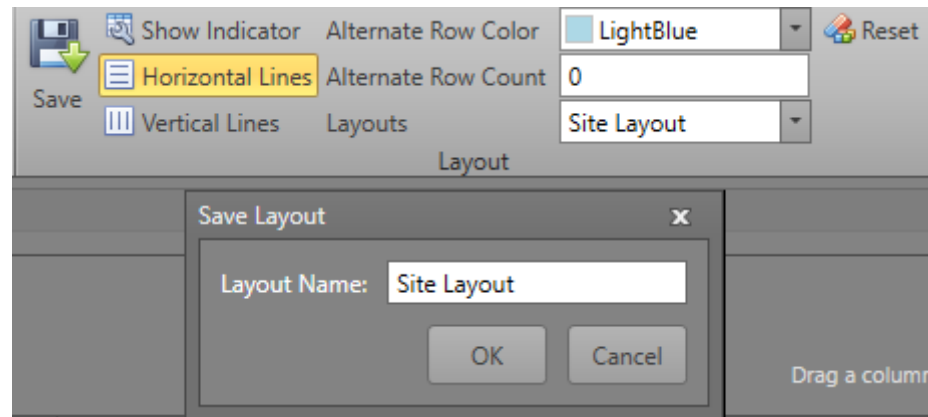


Saving and Loading Layouts



Saving and Loading Layout

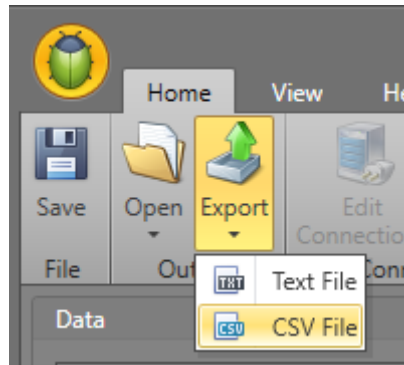
- Alongside the formatting rules and filters, the column, grouping, and navigation and summary panel data settings can be saved and loaded as a layout .xml file.
- Utilize different layouts and formats depending on the project and your preferences.
 - Note: **Visibility** and **Allow** properties are saved via the application.
 - When you open the application next time, it will remember these settings.



Exporting

Exporting Logs

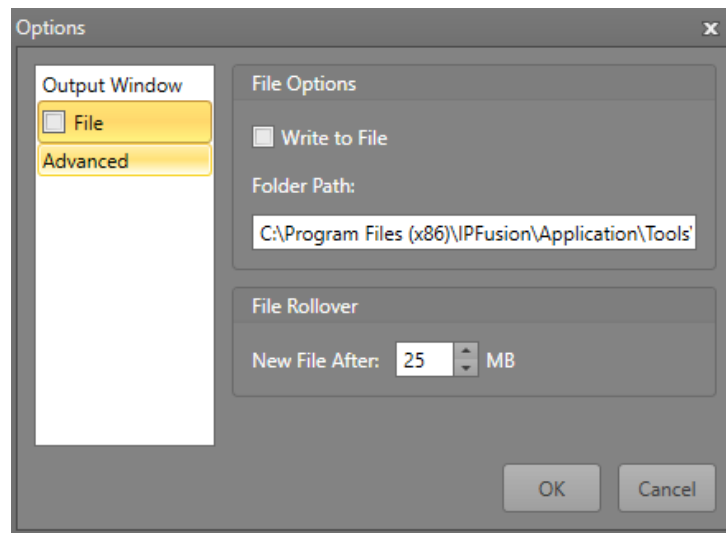
- The current logs and data can both be printed or exported as a separate file (txt or csv).
- Use these tools to create records of logs that can easily be referenced and looked into by integrators and developers.



Saving to File

Saving to file

- Instead of live capturing the data, the logs can be saved to a file.
- Select and add the necessary information in the Options window.
- Useful if you cannot actively look at the data at the same time but still want to continuously log all the activity and debugging messages for later inspection.



Module 8 Complete
