

Module 12

Advanced Features:
Language Manager

Overview

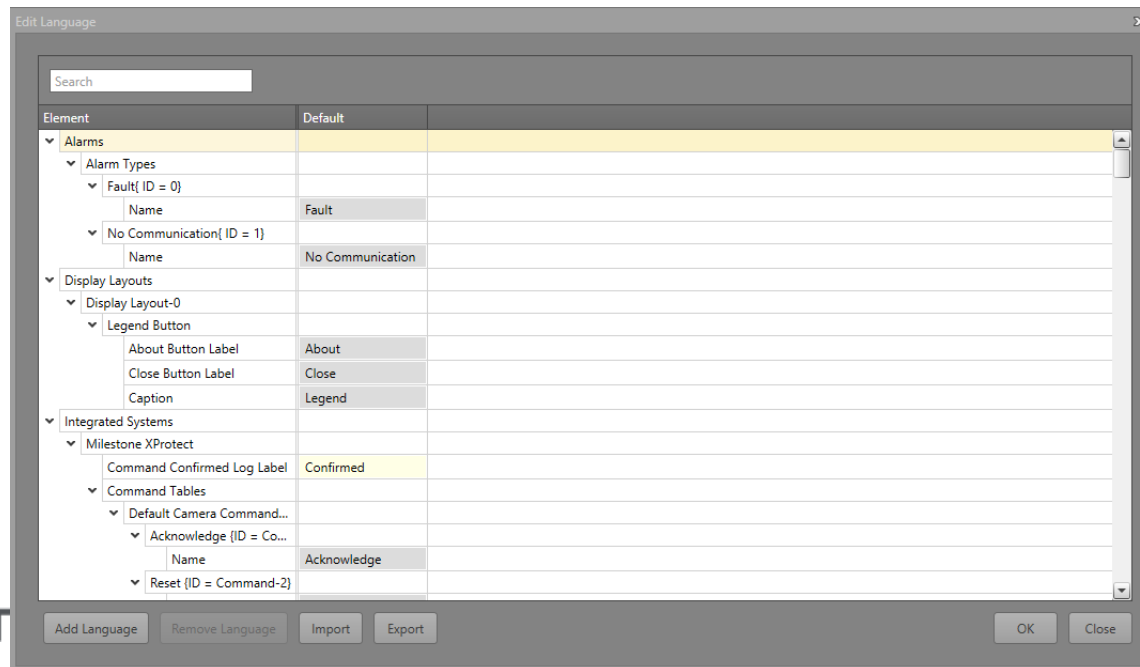
Overview

- Allows the addition and editing of the language used in displaying the text strings in Runtime.
- Useful when a site needs to have multiple languages for multilingual operators and international operations.

The Default Language

Runtime Default Language

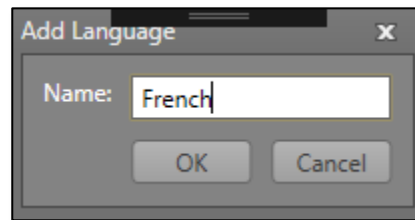
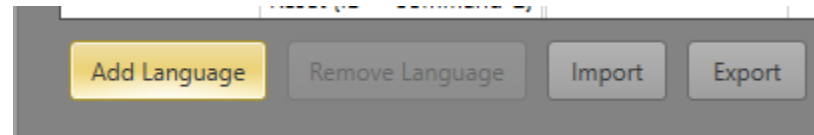
- When a project is initially created, it creates a default language file.
 - This file contains all the default texts and strings of the different IPFusion Runtime components
 - For example: windows, views, button text, integrated system status and command names, asset captions, logging descriptions, etc.
 - Strings which are not editable elsewhere in Designer can be edited here



Adding and Removing Languages

Adding Languages

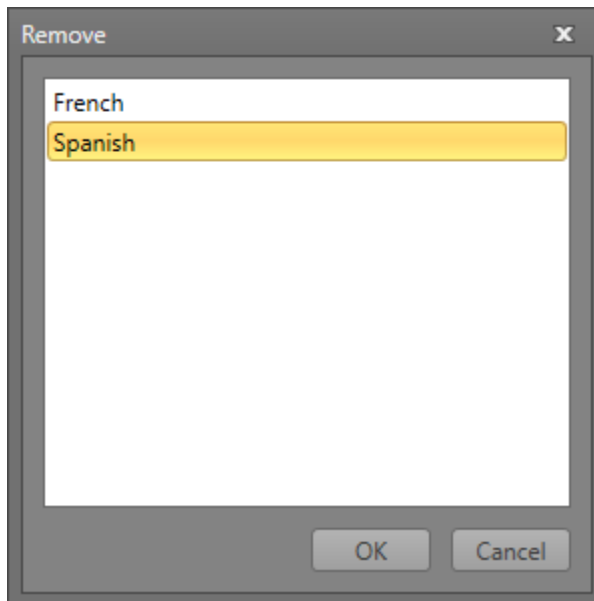
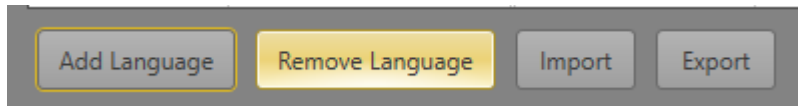
- Click the **Add** button and input the desired name of the new language. Add the text for the language in the associated column.



Element	Default	French
▼ Display Layouts		
▼ Display Layout-0		
▼ Legend Button		
About Button Label	About	Au sujet de
Class Button Label	Class	

Removing Languages

- Click the **Remove** button and select the language to be deleted.
- The **Default** language cannot be deleted.



Element	Default	French
▼ Display Layouts		
▼ Display Layout-0		
▼ Legend Button		
About Button Label	About	Au sujet de

Import and Export Languages



Import and Export Languages

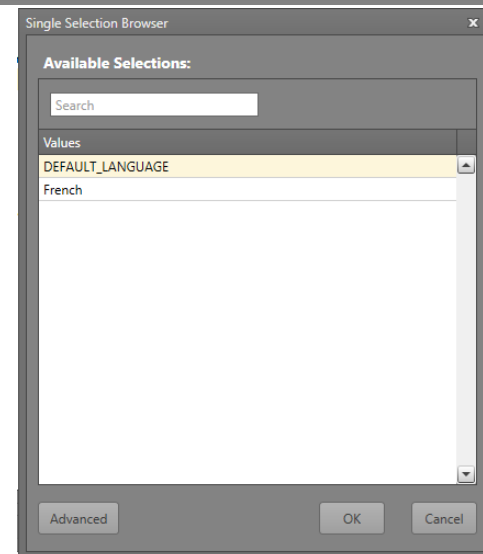
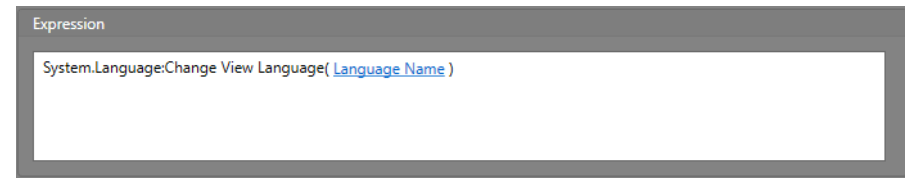
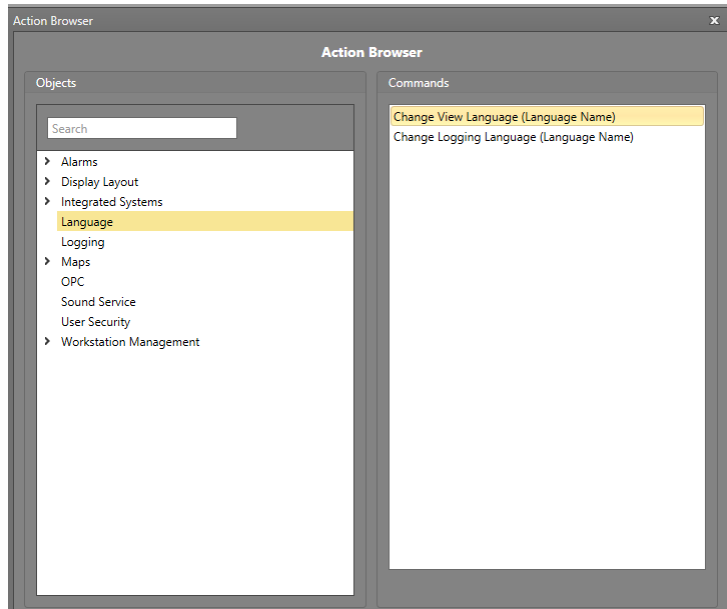
- Users can **Import** and **Export** the created language strings.
- They are exported as a .csv file and can easily be edited using external programs.
- Users can then import the edited language .csv file and the changes will be reflected.

Element	Default	French
▼ Display Layouts		
▼ Display Layout-0		
▼ Legend Button		
About Button Label	About	Au sujet de
Close Button Label	Close	Fermer
Caption	Legend	Légende

Change Language

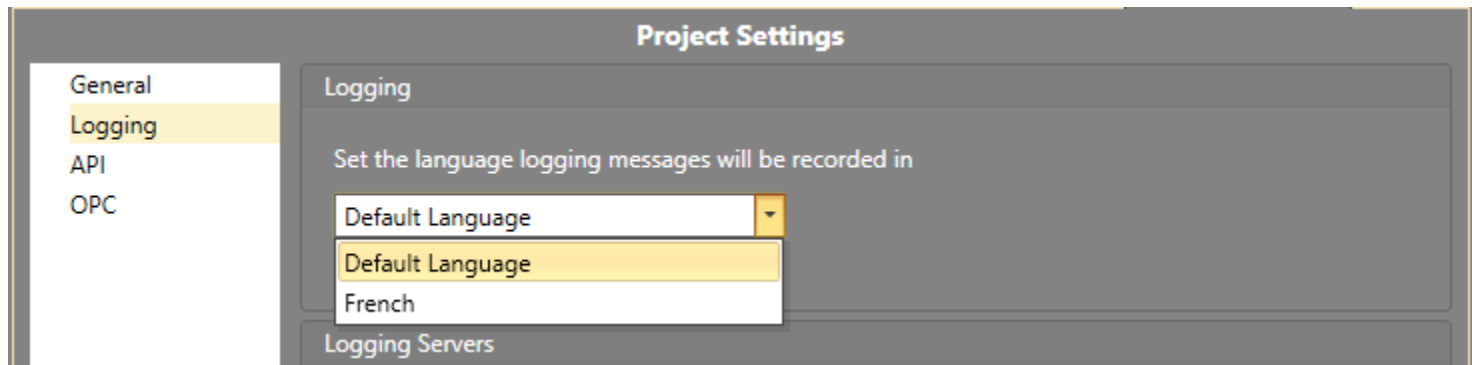
Change Language — Runtime

- The Runtime language can be changed using Workflows
- Using an Action block, select the **Language > Change View Language** command
- Click **Language Name** and select the language to use



Change Language — Logging

- The language used for the logs can be configured in the **Project Settings**
- Go to **Logging** and select the language to use from the drop-down menu



Module 12 Complete
